
2012

210036

2014

7.4%

8%

8.7%

9%

1.

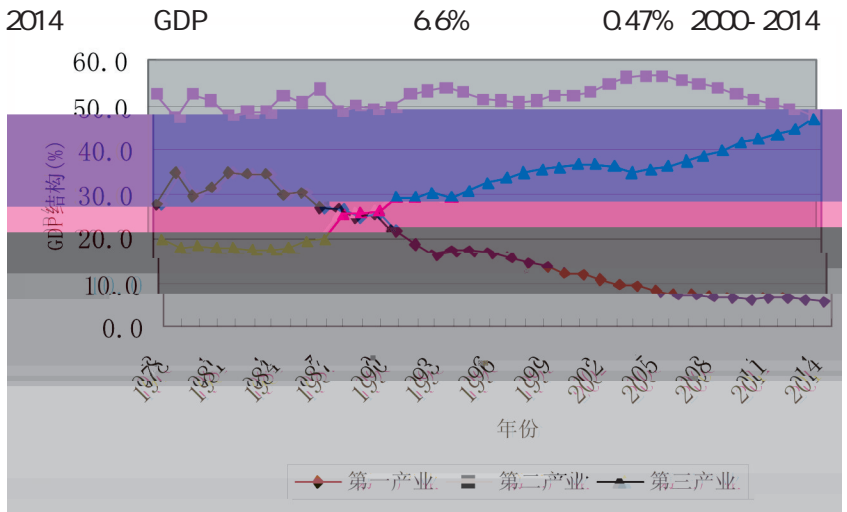
1 2000-2014

122 51.9

2012

2015 1

35.9 5.6 47.7 46.7 2000-2014
 GDP
 4.2% 0.3% 2010
 2000-2014
 GDP
 10.8%
 0.77% 2010
 2000-2013

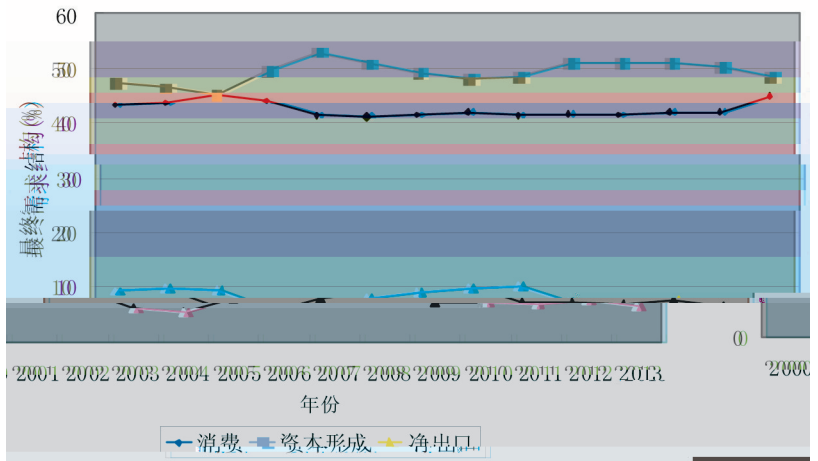


4.3 64.3 31.4 1.8 55.9
 42.3 2000-2013
 GDP
 2.5%
 0.19% 2000-2013
 8.4%
 0.65% 2000-2013
 GDP
 10.9%
 0.84%

1
 2014 2014

2.

2013
 26622.79 2000 7.17
 2013
 28634.29 2000 7.08
 2013
 3904.67 2000 4.89
 2013
 2000-2013



2

2

1.6%
 0.12% 2010-2013
 3.4% 1.13% 2000-2013
 2.7% 0.9% 2000-2013
 0.7% 0.23%
 2010 2013

2014
 1.1% 0.08% 2010-2013
 2.7% 0.21% 2010-2013

3.

$$X_{ij} + Y_i = X_i \quad i=1, 2, \dots, n \quad X = I - A^{-1}Y$$

$$I - A^{-1} \quad Y \quad X \quad A$$

Y I-A⁻¹

R (R=

/)
2012

2012

59.33% 23.15% 57.30%

1

2012

1 2012

| | | | | | | | | |
|---|--------------|--------------|-------------|-------------|-------------|--------------|--|--------|
| | | | | | | | | % |
| | 14011738.46 | 15117483.24 | 817125.13 | 4308127.07 | -71561.86 | 34182912.04 | | 5.70 |
| | 79104494.27 | 184967245.10 | 54999438.53 | 10660053.53 | -723003.62 | 329008227.80 | | 54.86 |
| | 142744707.40 | 76916072.86 | 12977858.07 | 5532808.06 | -1647393.52 | 236524052.90 | | 39.44 |
| | 235860940.20 | 277000801.20 | 68794421.74 | 20500988.66 | -2441959.00 | 599715192.80 | | 100.00 |
| % | 39.33 | 46.19 | 11.47 | 3.42 | -0.41 | 100.00 | | — |

2012

2 2012

%

. 39.33%
46.19% 11.47%. 3.42%

| | | | | | | |
|--|--------|--------|--------|--------|--------|--------|
| | | | | | | |
| | 5.94 | 5.46 | 1.19 | 21.01 | 2.93 | 5.70 |
| | 33.54 | 66.77 | 79.95 | 52.00 | 29.61 | 54.86 |
| | 60.52 | 27.77 | 18.86 | 26.99 | 67.46 | 39.44 |
| | 100.00 | 100.00 | 100.00 | 100.00 | 100.00 | 100.00 |

2012

1.

2012

1

(-0.41%)

3

3

| | | | | | | | | |
|--|---|-----------|-----------|----------|---|----------|----------|-----------|
| | | 235860940 | 277000801 | 68794422 | | 20500989 | -2441959 | 599715193 |
| | % | 39.33 | 46.19 | 11.47 | % | 3.42 | -0.41 | 100.00 |
| | | 265853745 | 262015567 | 58292317 | | 16012396 | -2458832 | 599715192 |
| | % | 44.33 | 43.69 | 9.72 | % | 2.67 | -0.41 | 100.00 |
| | | 220875106 | 306994207 | 58292317 | | 16012396 | -2458832 | 599715192 |
| | % | 36.83 | 51.19 | 9.72 | % | 2.67 | -0.41 | 100.00 |
| | | 220875106 | 262015568 | 91876368 | | 27406984 | -2458832 | 599715192 |
| | % | 36.83 | 43.69 | 15.32 | % | 4.57 | -0.41 | 100.00 |

2012

4

5

25

25

25

1.75

Q.75

4

| | | | | | | | | |
|---|-------------|-------------|-------------|-------------|--------------|-------------|--------|-------|
| | | | | | | | % | ±% |
| | 15793514.35 | 14299655.22 | 692383.4208 | 3364883.335 | -72056.33371 | 34078379.99 | 5.68 | -0.02 |
| | 89163665.78 | 174960857.4 | 46603265.42 | 8326086.001 | -727999.382 | 318325875.2 | 53.08 | -1.78 |
| | 160896564.9 | 72755054.89 | 10996667.99 | 4321426.311 | -1658776.572 | 247310937.6 | 41.24 | 1.80 |
| | 265853745.1 | 262015567.5 | 58292316.82 | 16012395.65 | -2458832.288 | 599715192.7 | 100.00 | 0.00 |
| | 44.33 | 43.69 | 9.72 | 2.67 | -0.41 | 100.00 | — | — |
| % | | | | | | | | |

2012 5.70% 54.86% 39.44% 5.68% 53.08% 41.24%

0.02% -1.78% 1.80%

+5%

-0.004 -0.356 0.36

1

0.004

0.356

0.36

2.78

1

5

5

25

25

1.75

Q.75

2012 5.70% 54.86% 39.44% 5.65% 55.57% 38.78%

0.05% 0.71% -0.66%

+5%

-0.01 0.142 -0.132

1

001

0132

0142

7.04

1

6

5

385
25

1.15

25

6

| | | | | | | | % | ±% |
|---|--------------|--------------|-------------|-------------|-------------|--------------|--------|-------|
| | 13121478.34 | 14299655.22 | 1091287.45 | 5759369.61 | -72056.33 | 34199734.28 | 5.70 | 0.00 |
| | 74078452.92 | 174960857.40 | 73452883.33 | 14251016.12 | -727999.38 | 336015210.30 | 56.03 | 1.17 |
| | 133675174.80 | 72755054.89 | 17332196.86 | 7396598.59 | -1658776.57 | 229500248.60 | 38.27 | -1.17 |
| | 220875106.10 | 262015567.50 | 91876367.64 | 27406984.32 | -2458832.29 | 599715193.20 | 100.00 | 0.00 |
| % | 36.83 | 43.69 | 15.32 | 4.57 | -0.41 | 100.00 | — | — |

2012

5.70% 54.86% 39.44%

5.70% 56.03% 38.27%

0.00% 1.17% -1.17%

+5%

0.00 0.234 -0.234

1

0.234

0.234

4.27

1

2.

7

2012

%

| | | | | | | % |
|--|--------|--------|--------|--------|--------|--------|
| | 4.32 | 0.25 | -7.76 | 26.11 | -0.01 | 5.70 |
| | 29.05 | 85.40 | 108.59 | 57.11 | 23.04 | 54.86 |
| | 66.63 | 14.36 | -0.83 | 16.79 | 76.97 | 39.44 |
| | 100.00 | 100.00 | 100.00 | 100.00 | 100.00 | 100.00 |

2012

2012

8

%

7

4.32 0.25 -2
19.05 75.40
76.63 24.36
100.00 100.00

8
9 10%
10%
9

| | | | | | | | % | ±% |
|-------------|-------------|-------------|-------------|--------------|-------------|--------|-------|----|
| 13117320.92 | 15117483.24 | 817125.1314 | 4308127.067 | -71561.8603 | 33288494.5 | 5.55 | -0.15 | |
| 65054648.96 | 184967245.1 | 54999438.53 | 10660053.53 | -723003.6198 | 314958382.5 | 52.52 | -2.34 | |
| 157688970.2 | 76916072.86 | 12977858.07 | 5532808.062 | -1647393.52 | 251468315.7 | 41.93 | 2.49 | |
| 235860940.1 | 277000801.2 | 68794421.74 | 20500988.66 | -2441959.001 | 599715192.7 | 100.00 | 0.00 | |

2012 5.70% 54.86% 39.44% 5.55% 52.52% 41.93%
-0.15% -2.34% 2.49% +
10% -0.015 -0.234 0.249 1
0.015 0.234
0.249 4.02
1
10 10%
10%

| | | | | | | | % | ±% |
|-------------|-------------|-------------|-------------|--------------|-------------|--------|-------|----|
| 14011738.46 | 14067057.63 | 817125.1314 | 4308127.067 | -71561.8603 | 33132486.43 | 5.52 | -0.18 | |
| 79104494.27 | 168466766.4 | 54999438.53 | 10660053.53 | -723003.6198 | 312507749.1 | 52.11 | -2.75 | |
| 142744707.4 | 94466977.07 | 12977858.07 | 5532808.062 | -1647393.52 | 254074957.1 | 42.37 | 2.93 | |
| 235860940.2 | 277000801.1 | 68794421.74 | 20500988.66 | -2441959.001 | 599715192.7 | 100.00 | 0.00 | |

2012 5.70% 54.86% 39.44% 5.52% 52.11% 42.37%
-0.18% -2.75% 2.93% +10%
-0.018 -0.275 0.293 1
0.018 0.275
0.293 3.41
1
11
10% 10%
7.7% 7.7%
2.3% 2.3%
11

| | | | | | | | % | ±% |
|-------------|-------------|-------------|-------------|--------------|-------------|--------|-------|----|
| 14011738.46 | 15117483.24 | 616282.0517 | 4290292.304 | -71561.8603 | 33964234.2 | 5.66 | -0.04 | |
| 79104494.27 | 184967245.1 | 51844686.02 | 10379674.33 | -723003.6198 | 325573096.1 | 54.29 | -0.57 | |
| 142744707.4 | 76916072.86 | 16332449.77 | 5832375.705 | -1647393.52 | 240178212.3 | 40.05 | 0.61 | |
| 235860940.2 | 277000801.2 | 68793417.84 | 20502342.33 | -2441959.001 | 599715192.6 | 100.00 | 0.00 | |

